

# 2019 F-Series

The Power Family of  
Front Wheel Drive

permobil







## Inspired design

---

The F-Series builds on over 50 years of experience to create our most capable family of front wheel drive power wheelchairs ever. We've combined a low center of gravity,

optimized weight distribution and powerful high efficiency motors to offer enhanced base stability, obstacle climbing and chair responsiveness.




# Comfort is king

Corpus®, the world's leading ergonomic seating system, just got better. Biomechanically optimized power positioning has been enhanced with improved Ergo seat and backrest cushions. Our new dual density backrest foam promotes greater surface area contact while the redesigned Ergo

seat pelvic well insert can help pressure redistribution and reduce peak pressures. Stretch-Air covers offer a breathable, moisture resistant fabric material to enhance comfort and help protect underlying foam.







CasterGlide™ —  
Worry free adjustment  
free anti-flutter device

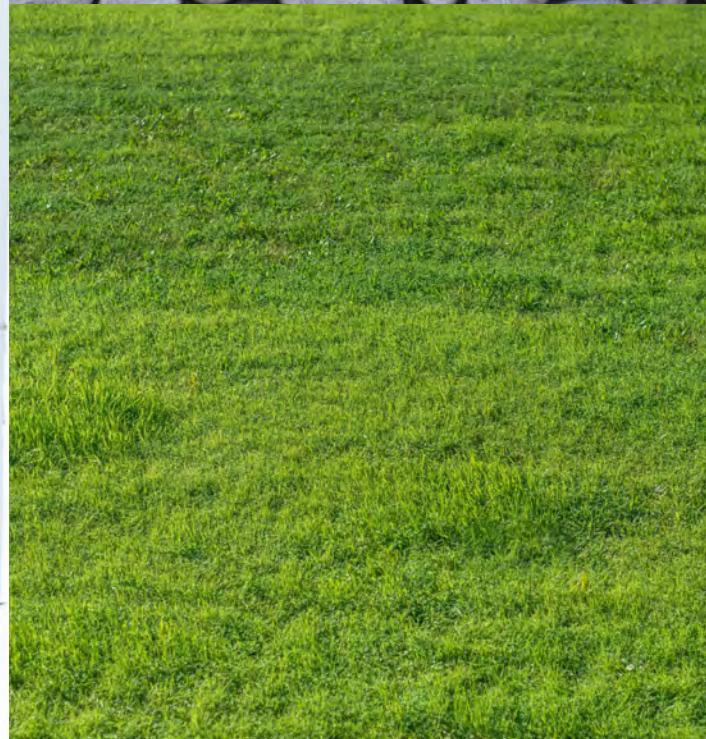
ComfortRide Pro —  
Oil dampened shocks for  
greater vibration isolation





# Superior suspension

Conquer your world with ComfortRide and ComfortRide Pro fully independent, adjustable suspension. Enjoy superior vibration reduction, ride comfort and drive performance for the widest variety of driving scenarios. The front wheel driving experience is further enhanced by our patented ESP (Enhanced Steering Performance) gyroscope tracking technology, which provides exceptional tracking at high speeds, on side slopes or with alternative drive systems.







3.5" rearward shift of seating system during elevation

14"

3 points of contact for added stability



# Reach for more

The world isn't one dimensional. Your seat elevator shouldn't be either. ActiveHeight™ elevation and ActiveReach™ forward tilt perform seamlessly to create a seating system like no other. With up to 14" of vertical seat adjustment and 45° of

ActiveReach forward tilt capability, the F-Series empowers you to reach for more and go further faster with new elevated drive speeds of up to 3.2mph.

	F3	F5	F5VS
↑ <b>ActiveHeight</b>	12"	14"	14"
↶ <b>ActiveReach</b>	30°	45°	45°



10° ActiveReach is no charge with ActiveHeight seat elevation package



# Small footprint, big impact

The F3 Corpus offers the smallest footprint of the F-series front wheel drive power wheelchairs. Its compact size and agility allows users to easily maneuver in and out of tight spaces. The optimized battery weight distribution, lower center of mass and fully adjustable ComfortRide suspension improve stability while traversing inclines or declines. Experience the enhanced functionality of the F3 by combining outstanding chassis performance with Permobil's industry leading Corpus Seating System offering 12" of ActiveHeight and up to 30° of ActiveReach forward tilt technology.





# Strength and stability

Power meets performance on the new F5 Corpus with a blazing 7.5mph top end speed and upgraded ComfortRide Pro suspension. All-wheel independent, fully adjustable, oil dampened shocks provide the ultimate in ride comfort while helping to reduce vibrations that can transfer from terrain up to user. Experience enhanced vibration reduction driving in all seat positions including an unprecedented 14" ActiveHeight seat elevation. Climb and reach higher with increased obstacle negotiation, exceptional motor torque and enhanced stability allowing up to 45° of ActiveReach forward tilt functionality. Standard performance options include aggressive tread tires, caster mud guard protection and 3 premium metallic colors.

## F5 Corpus

Up to 45° ActiveReach & 14" ActiveHeight

Oil-dampened horizontally opposed shocks

Caster mud guard protection

Aqua

Premium color options on F5 & F5VS:





# Stand without compromise

We combined all of the performance features of the F5 Corpus with superior power standing functionality. Fully programmable standing sequences allow user position to be optimized using supine, semi-reclined or sit-to-stand techniques. Further customize standing positions with adjustable anterior chest pad, moldable knee supports and power articulating footplates. From face-to-face interactions to improved health outcomes, the F5VS empowers you to explore the vast array of standing benefits.





New high power LED  
headlights are twice as  
bright, making it easier  
to see and be seen



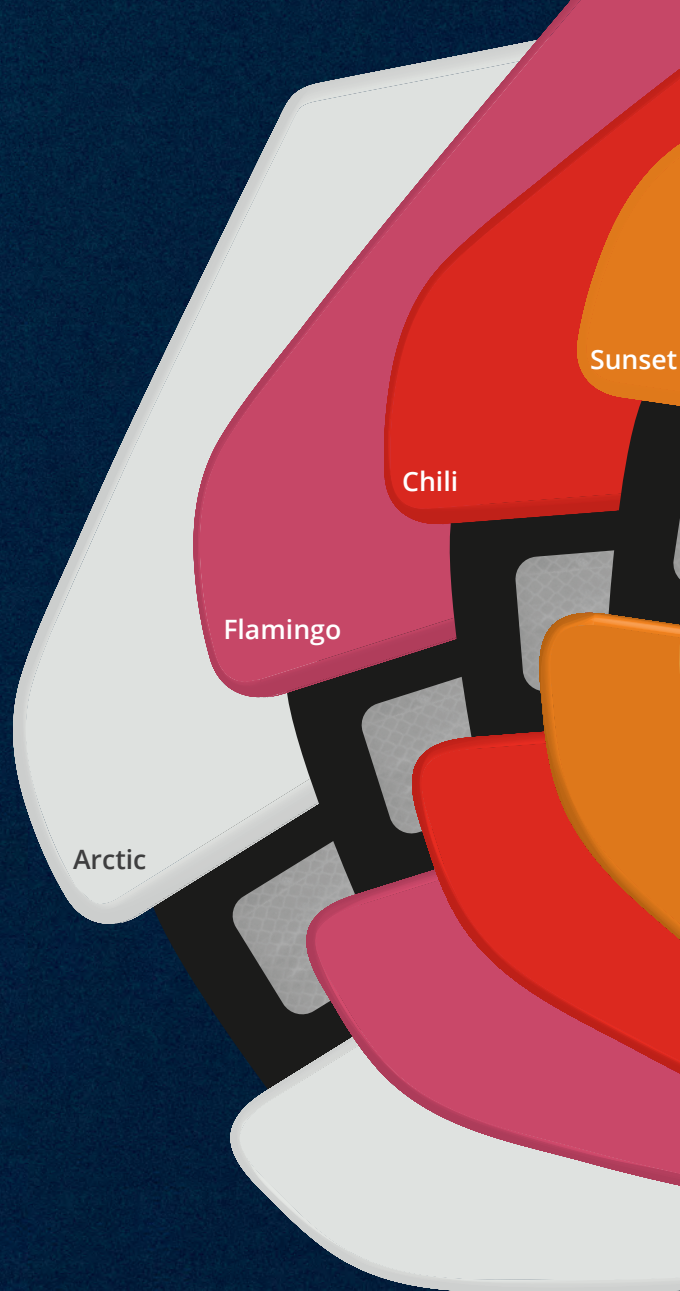
## Make a statement

---

With a sleek new design, expanded color/hydrographic options and powerful new LED lighting, you should be prepared to turn a few heads in your new F-Series.

*Please Note: Actual product colors may vary from colors shown*





Sunset

Chili

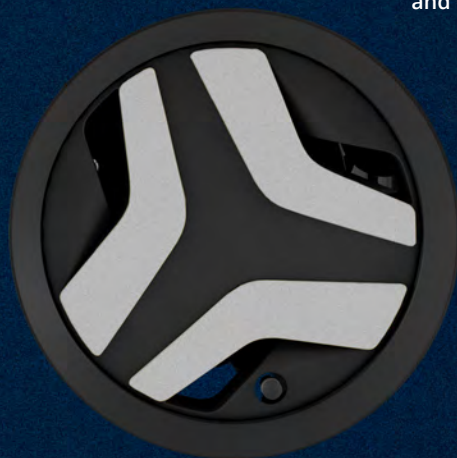
Flamingo

Arctic

## Premium metallic colors



Gold



Platinum



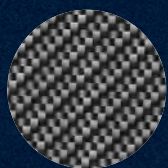
Bronze

No charge on F5 Corpus  
and Corpus VS

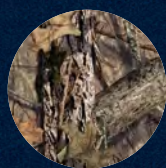




## Hydrographic options



Carbon Fiber



Mossy Oak®  
Breakup®  
Country™



CDG Poly



Sugar Skulls



Water Lily



Fireball



## Specifications



	F3 Corpus	F5 Corpus	F5 Corpus VS
<b>Maximum user weight</b>	300 lbs	300 lbs	300 lbs
<b>Maximum speed</b>	6 mph	7.5 mph	7.5 mph
<b>Range</b>	13 mi*	16 mi*	16 mi*
<b>Base width</b>	24"	25.5"	25.5"
<b>Base length</b>	40" with anti-tips 36" without anti-tips	42" with anti-tips 38" without anti-tips	43"
<b>Minimum turning radius</b>	26.5"	30"	30"
<b>Ground clearance</b>	3"	3"	3"
<b>Recommended battery type</b>	Group 34 or 24	Group 24	Group 24
<b>Weight Including batteries</b>	386 lbs (Grp 34s), 405 lbs (Grp 24s)	410 lbs (Grp 24s)	421 lbs (Grp 24s)
<b>Drive electronics</b>	R-Net 120A	R-Net 120A	R-Net 120A
<b>Seat-to-floor height</b>	17.5", 18.5", 19.5"	17.5", 18.5", 19.5"	17.5", 18.5", 19.5"
<b>Optional seat elevation</b>	12"	14"	14"
<b>Drive wheel</b>	14"	14"	14"
<b>Casters</b>	8"	8"	8"
<b>Tilt options</b>	Posterior — 0° – 50° ActiveReach — 5°, 10°, 20°, 30°	Posterior — 0° – 50° ActiveReach — 5°, 10°, 20°, 30°, 45°	Posterior — 0° – 50° Standing
<b>Legrest angle- power</b>	85° – 180°	85° – 180°	85° – 180°
<b>Backrest angle- power recline</b>	85° – 180°	85° – 180°	85° – 180°
<b>Backrest height</b>	20", 23" – 28" (1" incr.)	20", 23" – 28" (1" incr.)	20", 23" – 28" (1" incr.)
<b>Seat depth</b>	14" – 22" (1" incr.)	14" – 22" (1" incr.)	14" – 22" (1" incr.)
<b>Seat width</b>	17" – 23" (2" incr.)	17" – 23" (2" incr.)	17" – 23" (2" incr.)
<b>Arm pad lengths</b>	10", 13", 16", 18"	10", 13", 16", 18"	10", 13", 16", 18"

\*Actual driving range will vary based on driving and battery conditions. | Specifications may vary based upon configuration. Please refer to your owners manual for warnings and instructions for the safe operation of your wheelchair in a variety of driving conditions.



My Permobil



Virtual Seating  
Coach

### NOTE:

Permobil Connect comes standard on all F-Series chairs.